



VB-MAX

Maxi Jumbo Series Valve Boxes

Primary Application

Protects in-ground irrigation valves. Also functions as a durable enclosure that provides easy access to valves for maintenance. Used in turf applications to house single valves, multiple valves, or other subsurface components of an irrigation system.

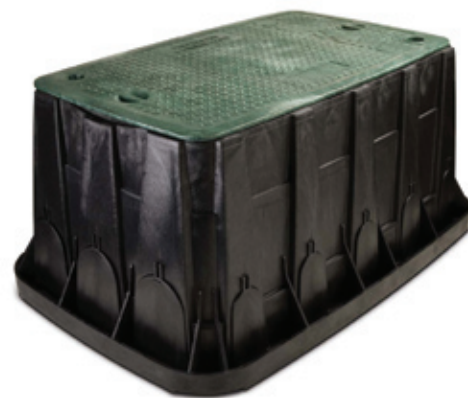
Features

- Easily removable knock-outs simplify pipe placement and reduce installation time. Six large knock-outs on the ends accommodate up to 5" diameter pipe and 12 knock-outs on the sides accommodate up to 3" diameter pipe.
- Large top opening area provides unobstructed access to valves.
- Knock-out retainers hold removed knock-outs in place above the pipe to help keep dirt out during backfill.
- Corrugated sides provide strength both before and after knock-outs are removed.
- Two shovel access slots on body allow for easy lid removal.
- Two wrench grips on lid make it easier to remove the lid.
- Beveled lid edges help prevent damage to lids from lawn equipment.
- Interlocking bottoms allow boxes to mate securely together bottom-to-bottom for deep installations.
- Two stainless steel bolts and clips securely fasten the lid to the body.
- Optional stainless steel bolt and clip securely fasten the lid to the body.
- Lid marking area provides dedicated location for valve identification.
- Available lid colors are green and tan (for desert soils).

Models and Dimensions

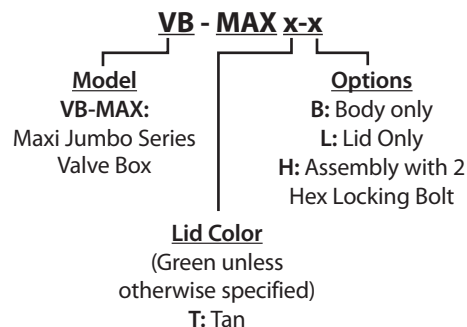
- **VB-MAX:** Maxi Jumbo rectangular valve box
40.3" L x 27.1" W x 18.0" H
(102,4 cm x 68,8 cm x 45,7 cm)

Includes 2 hex head 3/8" x 3" (1,0 x 7,6 cm) bolts, washers, and clips.



VB-MAX

How to Specify/Order



Specifications

VB-MAX SERIES

Valve boxes shall be used as durable, rigid enclosures for valves or other irrigation system components requiring subsurface protection for installation or maintenance. The valve box shall be made of structural foam HDPE resin that is resistant to UV light, weather, moisture, and chemical action of soils.

Valve box body and black lid shall be composed of 100% recycled HDPE.

The maxi jumbo rectangular body shall have knock-outs molded into the sides that can be readily removed. The knock-outs shall remain an integral part of the body unless removed to run pipes or wires through the valve box.

The valve box shall have corrugated sides. The valve box shall have a grooved feature on one side, just below the lid at the top of the box, for inserting a shovel blade or other prying tool to provide easy lid removal. This is useful following compaction of the surrounding soil or after the eventual accumulation of thatch over the valve box.

Boxes shall have a stepped feature on the bottom that securely interlocks two boxes together when mated bottom-to-bottom for use in a deep installation.

Lids shall have beveled edges to minimize potential damage from lawn equipment. Lids shall be clearly marked with the words "Irrigation Control Valve" molded onto the top. Lids shall have a marking area measuring at least 6" by 2" that is suitable for branding or other means of identification.

The locking bolt, washer, and clip shall be made of stainless steel.

The valve box shall be manufactured by Rain Bird Corporation, Glendora, California.



Rain Bird Corporation

6991 E. Southpoint Road
Tucson, AZ 85706
Phone: (520) 741-6100
Fax: (520) 741-6522

Rain Bird Technical Services

(800) RAINBIRD (U.S. and Canada)

Rain Bird Corporation

970 West Sierra Madre Avenue
Azusa, CA 91702
Phone: (626) 812-3400
Fax: (626) 812-3411

Specification Hotline

800-458-3005 (U.S. and Canada)

Rain Bird International, Inc.

P.O. Box 37
Glendora, CA 91740-0037
Phone: (626) 963-9311
Fax: (626) 852-7343

www.rainbird.com

The Intelligent Use of Water™ -- Visit www.rainbird.com to learn about our efforts

© Registered Trademark of Rain Bird Corporation
© 2008 Rain Bird Corporation 6/08

D39602A